

Description

The Biomedical Sciences Doctoral Program is an integrated, inter-departmental program in the basic biomedical sciences that provides students with a broad-based two-year core curriculum while concentrating the research experience and additional courses in a specific area. The program is intended to develop extensive inter-departmental research interactions including seminar programs, discussion groups and journal clubs.

The PhD degree is awarded after successful completion of academic coursework, a comprehensive exam, and a dissertation defense of an original research project in a particular field. The program reflects the interest of the Institution to promote the formation of professionals in the biomedical sciences.

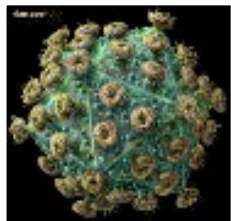
Research Techniques

Small animal surgery
Behavioral learning
Molecular biology
Histological techniques
Real-time PCR
Microarrays
DHPLC
Viral analysis
Cell culture
Brain slices
Patch-clamp electrophysiology
In-vivo motility & secretion
In-vivo electrophysiology



Research Areas

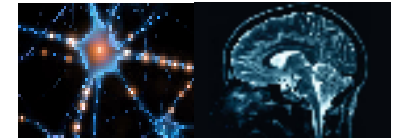
HIV/AIDS
NeuroAIDS
Molecular Virology
Neuroscience
Endometriosis
Cancer
Asthma
Drug & alcohol abuse
Genetics
Gastrointestinal disorders
Protein structure and functions



Professional Outlook

Biomedical scientists study aspects of living organisms, such as reproduction, growth, and development to develop treatments, prevent disease, and promote health. Their research can investigate health (basic) or investigate how to prevent disorders (applied). They may use human volunteers, animals or models. Scientists in this field also conduct experiments, interpret and analyze medical results and statistical data, teach and supervise students, apply for grants, write scientific articles, present at conferences, implement medical diagnosis and advise in medical treatment.

Workplaces include laboratory-based institutes, hospitals, pharmaceutical / biotechnology industries, government & public health agencies (Centers for Disease Control, National Institutes of Health, etc.), medical and scientific publishing, colleges and universities, etc.



Curriculum

First Year

1st Semester		2nd Semester	
Biochemistry**	4	Biochemistry**	2
Physiology**	4	Physiology**	2
Seminar	1	Seminar	1
Rotation*	2	Microbiology**	6
		Rotation*	2

Summer

Histology and Cell Biology** 4

Second Year

1st Semester		2nd Semester	
Pharmacology**	4	Pharmacology**	4
Seminar	1	Teaching Practicum	2
Proposal Writing	3	Electives	1-3
Ethics	2	Biostatistics	3
Electives *	1-3	Advanced Topics *	1-3

Third Year (minimum 10 credits)

1st Semester	2nd Semester
Thesis Research	Thesis Research
Special Topics *	Special Topics *

Fourth Year (minimum 10 credits)

1st Semester	2nd Semester
Thesis Research	Thesis Research

* Subject to student needs.

** Taken with the medical students.

Admission Requirements

To be considered for admission, the applicant must:

1. Have successfully completed a BS degree at a regionally accredited college or university with a minimum of 35 credits in sciences including the following courses:

General Biology	2 semesters (8 cr.)
General Chemistry	2 semesters (8 cr.)
Organic Chemistry	2 semesters (8 cr.)
Calculus	1 semester (3 cr.)
Physics	2 semesters (8 cr.)

2. Have a minimum overall GPA of 3.0 (on a 4.0 scale)

3. Have scored a minimum of 700 on the Graduate Record Examination (GRE) test.

4. Appear for a personal interview.

5. Submit the following documents:

- Official transcripts of all universities attended.
- Three letters of recommendation from professors or by individuals familiar with the applicant's professional work and skills.
- Official GRE scores (www.gre.org)
- Certificate of No Penal Record
- Completed application form.
- Application Processing Fee of US \$100.00 (non-refundable)
- Other documents may be required upon acceptance.

Applications for admission to the Ph.D. Program and the RISE Training Program are due on or before **JANUARY 15**. Application and recommendation forms are available at www.psm.edu and are accepted only for the fall term (August).



Send to:

Ponce School of Medicine
Admissions Office
Ph.D. in Biomedical Sciences
PO Box 7004
Ponce, PR 00732

CONTACT US AT

Tel (787) 840-2575 ext. 2142, 2143
Fax (787) 842-0461

admissions@psm.edu

KEY OFFICIALS

GRADUATE PROGRAM OFFICE

(787) 840-2575 ext 2158
macruz@psm.edu

MBRS-RISE PROGRAM

(787) 284-2038
psmrise@psm.edu

STUDENT AFFAIRS OFFICE

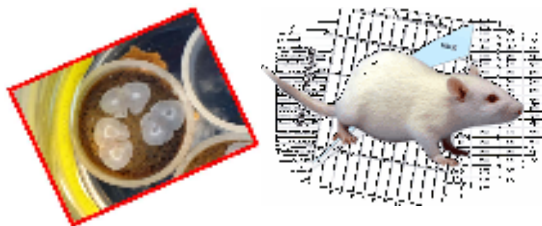
(787) 840-2575 ext 2123
studentaffairs@psm.edu

FINANCIAL AID OFFICE

(787) 840-2575 ext 2134
psmfinstu@psm.edu

REGISTRAR'S OFFICE

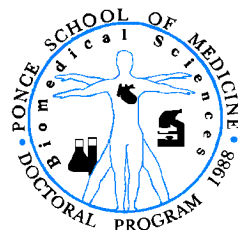
(787) 840-2575 ext 2128
registrar@psm.edu



PSM is accredited by CHE, LCME and MSCHE

Ponce School of Medicine does not discriminate on the basis of race, sex, creed, national origin, age or handicap.

Rev. 5/11



Ponce School of Medicine and Health Sciences



Ph.D. program in Biomedical Sciences



PSM graduate students work hard, play hard and succeed!

Our students benefit from:

- **MBRS- RISE Program (qualified applicants receive tuition waiver plus \$20,000 annual salary and lab supplies!)**
- Excellent scientific training without leaving Puerto Rico
- Working in state-of-the-art research laboratories
- Competitive fellowships and travel awards
- Presenting at international meetings
- Publishing scientific articles
- Participating in professional student organizations
- A friendly, family environment
- 100% employment after graduation